



June 2020 Bill  
Account No. 8934927925

CHIU TENG ENTERPRISES PTE LTD  
114 LAVENDER ST  
#18-01 CT HUB 2  
SINGAPORE 338729

RECEIVED  
25 JUN 2020

Total Amount Payable: **\$317.78**

Payment Due: 06 Jul 2020



705-001523-00762-0684

This is your tax invoice for  
26 TOH GUAN RD EAST #04-74 WORKERS'  
DORMITORY SINGAPORE 608595

**Billing Period**  
17 May 2020 - 16 Jun 2020

**Bill Date**  
21 Jun 2020

**Account Type**  
Domestic

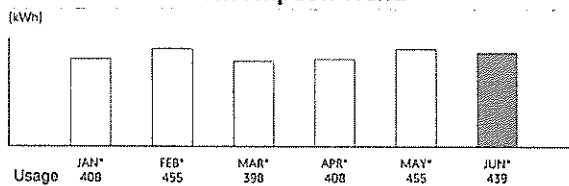
**Deposit**  
\$100.00

**Current Charges**

**Consumption Trend**

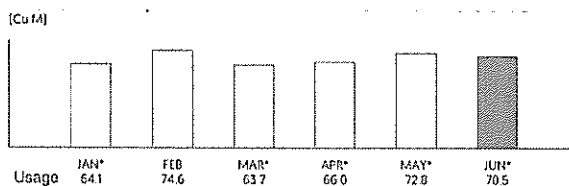
**Total**

**Gas Services**  
by City Gas Pte Ltd (as Trustee)  
Usage: 439 kWh



\$75.11

**Water Services**  
by Public Utilities Board  
Usage: 70.5 Cu M



\$221.88

\*Estimated month

POSTMARK  
26 JUN 2020

BY: .....

GST \$20.79

**Current Charges:** **\$317.78**  
(Inclusive of GST)

Summary of Charges	
Balance Brought Forward from Previous Bill	\$329.80
Payment on 01 Jun 2020 - Thank You	-\$329.80
Outstanding Balance	\$0.00
Current Charges due on 06 Jul 2020 (Mon)	\$317.78
<b>Total Amount Payable will be deducted from your account with RHB Bank Berhad on 06 Jul 2020</b>	<b>\$317.78</b>

SP Services Ltd: Co Registration No [I99504470N] | GST Registration No [M2-8920920-4]

For details on difference between current charges and total amount payable, see Summary of Charges

For cheque payment: Crossed cheque is to be made payable to 'SP Services Ltd'. Please detach and mail this portion with your cheque to Orchard P.O. Box 341, Singapore 912312. (No receipt will be issued. Please do not send post-dated cheque.)

Payment Due:  
**06 Jul 2020**

Total Amount Payable:  
**\$317.78**

Please make full payment by the due date to avoid \$0.50 Pink Notice Fee and 1% Late Payment Charge.

Account No 8934927925	Cheque No	Bank:
		Branch:



8934927925

000000031778

Breakdown of Current Charges	Usage	Rate (\$)	Amount (\$)	Total (\$)
<b>Gas Services</b> by City Gas Pte Ltd (as Trustee)				
Gas Estimated on 16 Jun 2020	439 kWh	0.1711	75.11	75.11
<b>Water Services</b> by Public Utilities Board				
Water Estimated on 16 Jun 2020	40.0 Cu M	1,2100	48.40	
	30.5 Cu M	1,5200	46.36	
Waterborne Fee	40.0 Cu M	0,9200	36.80	
	30.5 Cu M	1,1800	35.99	
Water Conservation Tax	\$48.40	50%	24.20	
	\$46.36	65%	30.13	221.88
<b>Subtotal</b>			296.99	296.99
<b>GST</b>	\$296.99	7%	20.79	20.79
<b>Current Charges:</b> (Inclusive of GST)				<b>\$317.78</b>

**Meter Reading**

- You have been billed based on estimated consumption for 6 months. Please call us at 1800 222 2333 to arrange for a meter reading appointment.

**Notices**

- Payment received on or after 20 Jun 2020 may not be included in this bill.
- From all of us at SP Group, we wish all customers Selamat Hari Raya Aidilfitri.
- Download the SP Utilities app to pay your bill, submit meter readings and calculate your carbon footprint.

**Contact Information**

**General Enquiries:** 1800 222 2333

**Payment Arrangement:** 6671 7100

**Customer Service Centre**  
490 Lorong 6 Toa Payoh #09-11, HDB Hub  
Biz Three Lift Lobby 1, Singapore 310490  
✉ customersupport@spgroup.com.sg  
🌐 www.spgroup.com.sg

**Emergency Numbers**

- Electricity:** 1800 778 8888
- Water:** 1800 225 5782 (CALL PUB)
- Gas:** 1800 752 1800

This bill serves as a tax invoice for the collection of:  
 - Electricity charges for SP Services Ltd (2003021080) or Ohm Energy Pte Ltd (201501015E) or Tuas Power Supply Pte Ltd (200004985K) or Greenclay Energy Pte Ltd (201731014R) or Best Electricity Supply Pte Ltd (201502907C)  
 - Gas charges for City Gas Pte Ltd (as Trustee) (M90356440A)  
 - Water charges, NEWater charges, water conservation tax and waterborne fee for the Public Utilities Board (M9-8100014-4)  
 - Refuse removal fee for SembWaste Pte Ltd (M2-8922032-1) or Veolia ES Singapore P L (199804675H) or Colex Environmental Pte Ltd (201133340M) or 600 SuperWaste Management Pte Ltd (M2-0073013-5) or TEE Environmental Pte. Ltd. (200106073W) or ALBA W&H SmartCity Pte Ltd (201930124E)  
 The amount for GST shown on the bill is calculated based on the sum of the GST charged for each individual item.

**Different payment options with SP Services**

**Recurring Payment**  
GIRO and DBS/POSB  
Everyday credit cards

**Internet Banking**  
DBS Bank Ltd  
OCBC Bank  
United Overseas Bank Ltd

**Mobile App**  
Download SP Utilities mobile app from Apple Store or Google Play to pay bills using credit card and get customer support via live chat.

**Self Help Machines**  
You can pay your bill at SingPost Self-Service Automated Machines (SAMs), NETS Self-Service Stations, AXS Stations and DBS/POSB/OCBC ATMs.

**Counter Payment**  
Cash, NETS, Cashcard payments can be made at post offices and 7-Eleven stores.

Find out other payment options at [www.spgroup.com.sg](http://www.spgroup.com.sg)

We may, from time to time, contact you to obtain feedback or inform you about the services and offers of SP Services and its trusted partners. If you do not wish to be contacted, please email us at [customersupport@spgroup.com.sg](mailto:customersupport@spgroup.com.sg). Please visit [www.spgroup.com.sg](http://www.spgroup.com.sg) to read our T&Cs.



WLC Facilities Services Pte Ltd  
 45 Ubi Road 1 #05-01 Singapore 408696 |  
 Co Reg No: 201524486H |  
 GST Reg No: 201524486H

# Tax Invoice

Account No.: T260474-2  
 CHIU TENG ENTERPRISES PTE LTD  
 114 Lavender Street #18-01 CT Hub 2  
 SINGAPORE 338729

Invoice No : TG20060067  
 Invoice Date : 19/6/2020  
 Payment Due : 7/7/2020  
 Payment mode : GIRO  
 Deposit : \$100

SUMMARY OF CHARGES for 19 May 2020 to 18 Jun 2020	Amount (SGD)
Balance B/F from Previous Bill	\$ 168.97
Receipt during month - Thank you	\$ (168.97)
Outstanding Balance	\$ -
Total Current Charges due on 7/7/2020	\$ 160.35
<b>Total Amount Payable will be deducted from your bank account</b>	<b>\$ 160.35</b>

Payment received on or after 18 Jun 2020 may not be included in this bill

Accommodation site: Westlite Dormitory (Toh Guan) Pte Ltd

Current Month Charges	Meter Serial No.	Block & Unit No	Prev Meter Reading	Curr Meter Reading	Total Usage	Rate (SGD)	Total (SGD)
<b>Electricity Services</b>	LA4199405	Blk 26, #04-74	17,537	18,188	651 kWh	0.2302	\$ 149.86
For period: 19/5/2020 - 18/6/2020 (Actual reading taken on 18/6/2020)							
<b>Total Charges</b>							\$ 149.86
<b>Goods and Service Tax</b>							7% \$ 10.49
<b>Total Current Charges Inclusive of GST</b>							<b>\$ 160.35</b>

This is a computer generated invoice. No signature is required.

For payment via GIRO - Deduction will be made from your bank account on 4th of each month. If the deduction date falls on non-working day, the deduction will be made on the next working day.  
 For any enquiries, pls call (65) Fax

For cheque payment:  
 Crossed cheque is to be made payable to "WLC Facilities Services Pte Ltd".  
 Please detach and mail this portion with your cheque to WLC Facilities Services Pte Ltd c/o.  
 (No receipt will be issued. Please do not send post-dated cheque.)

Payment Due on	Invoice No	Cheque No	Bank / Branch
7 Jul 2020	TG20060067		

Account No.: T260474-2

**Total Amount Payable**

**\$160.35**

